



# NELL NEWS 2024



## SPRING MEETING OVERVIEW LETTER FROM LINDA SHERLOCK – with added PHOTOS

June 2024

It's a wrap for NELL's 2024 spring event in Rhode Island! In spite of the rain on Saturday morning and some traffic headaches on Friday evening, it was still a terrific weekend.

Saturday morning began with overcast skies and light drizzle before our departure to Pomham Rocks Lighthouse. We met at the Rhode Island Yacht Club and were escorted to *Lady Pomham II* by Dennis Tardiff and Charlie Gruetzner for the short ride. Alex Dias, a NELL member, was also part of the crew, along with his brother Adam. These gentlemen are all members of the Board of the Friends of Pomham Rocks Lighthouse. NELL made a donation to assist in the continuation of their endeavors. (see photo below taken by Carol Blake of Linda giving Dennis the donation check)



2<sup>nd</sup> boat to Pomham (Sherri Roberts)  
On way back from LH visit



Room with Fresnel Lens in it



Light in lantern room at Pomham  
3<sup>rd</sup> Boat to Pomham Light



The first two groups to go to the lighthouse weren't badly affected by the weather but, by the third trip, the rain came down and everyone got soaked.

After visiting Pomham Rocks, we gathered at the Cranston Public Library for a presentation by Sally Snowman, the last and only female lightkeeper at Boston Light, along with her husband, Jay Thomson. Sally shared stories and a slide show which encompassed her 20-year tenure at the lighthouse until her retirement in December 2023. Sally had several of her publications available for purchase and graciously autographed each one. (see 4<sup>th</sup> photo)



Our membership meeting was held on Sunday morning at the Elks Lodge in West Greenwich, RI. President Arlene Winkleman and her husband Henry were traveling during this event, so Sherri Roberts and I led the meeting. A vote was put to the membership regarding a preservation grant request from Eagle Light Caretakers for a restoration project at Eagle Island Light in Maine. The vote was unanimous for a \$5,000.00 grant to be awarded.



Sherri updated us on her plans for the fall 2024 meeting, which will also be in Rhode Island. A "Save the Bay" cruise is scheduled, during which we'll see 18+ lighthouses. It also includes a stop at Rose Island Light for lunch. A visit to Nayatt Point Lighthouse is also being arranged. This lighthouse is privately owned and most of our members have not yet visited it. More details will be forthcoming.

The winners of the raffle drawing that was organized by Ellen and Bob Granoth and Anthony Savino were drawn after the meeting. Several of our own members won prizes. The list of the winners is on our website and will also be announced in this NELL NEWS.



After the meeting, we headed to Westerly, RI for our visit to Watch Hill Lighthouse. Several volunteers from the Watch Hill Light Keepers Association were there to give directions, answer questions, and to keep things orderly. A donation was given to Ann Snowden Johnson, President of WHLKA, for the upkeep of the lighthouse. (see photo taken by Colette Long of Linda giving Ann the check in the lantern room) In turn, members of the

WHLKA gave each of us postcards of the lighthouse. And for all of you "Swiftie" fans, we had a fantastic view of Taylor Swift's Watch Hill house from the top of the lighthouse tower.



We enjoyed an added surprise during our visit to Watch Hill Lighthouse. The Viking ship Draken Harald Harfagre departed from Mystic Seaport in the morning on its way to Newport, where it was to begin its trip back to Norway aboard a Dutch cargo ship. The timing couldn't have been any better. It passed right by Watch Hill and provided some excellent photo opportunities. Thank you to Tom Pregman for informing us of this.

Many more thank-yous are in order. These members contributed in so many ways:

Thank you to Sherri Roberts for initiating the plans for this event. She got the ball rolling with her phone calls and emails to arrange our visits to the lighthouses, and for contacting Sally Snowman to be our guest speaker.

Henry and Arlene drove to Rhode Island to scope out the area in search of reasonably priced accommodations, to locate a venue for Sally Snowman's presentation, and to find local restaurants.

Sean Curran secured the meeting venue at the Elks Club. Thank you for always being available to help when asked.

Thanks to Debby Lilly for researching Pomham Rocks and Watch Hill Lighthouses and putting together the information that was included in the packets given to attendees. We appreciate her dedication.

Bob Taylor came through again with his wonderful postcards and badges. We can always depend on Bob for his photos.



Have you ever seen John Donovan without a camera? I don't think I have. Thank you, John, for the group photo and all the other photos you put on our website and on Facebook.



Many thanks to Gary Zunda and to Larry Olasky for volunteering to serve on the Preservation Committee.

Sandy Peterson and Debbie Brew are experts at running silent auctions and 50/50 raffles. We can count on them at each event for their fundraising efforts.

I personally want to thank Jean Zunda for taking the minutes of the meeting. She graciously agreed when I asked for her help

Ellen and Bob Granoth and Anthony Savino deserve a huge round of applause for all of the time and work they put into making the raffle drawing a successful fundraiser. In addition, they designed a coin commemorating NELL's 25<sup>th</sup> anniversary, which they had produced and sold at this event. You can also purchase these coins at future events. See photos on our website: <http://www.newenglandlighthouse lovers.org/> (and here)



To everyone who donated items for the silent auction, those who bid on the items, those who contributed to the 50/50 raffle, and/or the major raffle drawing, we appreciate your generosity. Congratulations to all the winners!

And thank you also to all of those members who attended this spring event - hope to see you in the fall in Rhode Island during the weekend of September 27-29, 2024. It will be a full and exciting weekend. In the meantime, have a safe and enjoyable summer!

Linda Sherlock,

Secretary



Three photos from the Roger William Park Botanical Gardens

Gary Zunda & Bob Mills



Debbie Lilly with her winning raffle prize

## WINNERS OF RAFFLE

1. Green's Ledge LH stay - Angela Tchao, Mass (ticket sold by Winkleman's)
2. Big Bay Point Lighthouse stay - Nate Curtis, Maine
3. West Quoddy Station stay - Debbie Lilly, PA (Nell Member)
4. Little River Lighthouse stay - Joe Cadoret - (ticket sold by Linda Sherlock)
5. Bar Harbor Motel stay - Collette Long, CT (Nell Member)
6. Cape May Whale Watch (4 tickets) - Peter Meuledyk, ME (from Ladies'Delight)
7. Bar Harbor Whale Watch (4 tickets) - Karen LaPlante, MA (Nell Member)
8. Plume House B&B stay - David Schulman, NY (Nell Member)
9. Gift Basket from Lighthouse Digest & other books - Ron Foster, CT (Nell Member)
10. The Lighthouse Inn stay - Paul & Pat Leary, MA (Nell Members)

**CONGRATULATIONS TO ALL THE WINNERS!**

The Eagle Light Caretakers have completed the Phase III preservation of Eagle Island Light in East Penobscot Bay Maine. This phase focused on work to the internal wrought iron circular stairway, the stairway landing and ceiling at the battery house, the ladder from the battery house to the lantern house and iron support frames in the main doorway. Before the work, rust and metal deterioration were present on all surfaces.

Eagle Light Caretakers contracted with J.M. Leslie & Co. of South Berwick, Maine to undertake the work. Principal Jim Leslie has more than 17 lighthouse restorations to his name in Maine and more in other New England states. Leslie and his crew have been integral to previous phases of work at Eagle Island Light, including re-mortaring the granite tower, painting the tower, and refinishing and painting the lantern house inside and out.

A key funder for the current Phase III work is New England Lighthouse Lovers (NELL) with a generous grant of \$5,000 made in June of this year. The NELL grant was specifically designated for restoration of the battery house landing and the ladder from the battery house up into the lantern house.

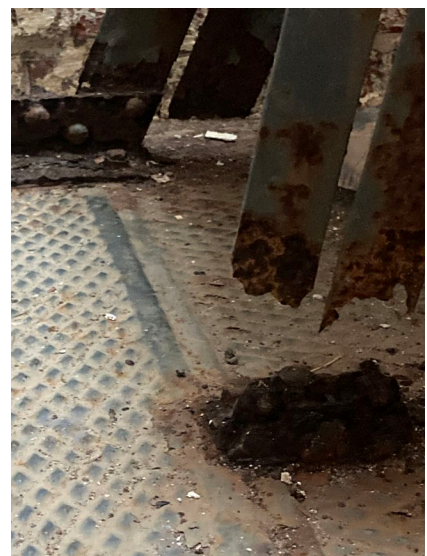
Sam Howe, President of Eagle Light Caretakers said, "Without this grant and the work it funded, safe passage to the top of the tower would not be possible. The footing of the battery house ladder was so deteriorated that we really would have had to stop visits to the light. Fortunately, NELL came through and made it happen."

The Eagle Light Caretakers host an annual open house in August and this year it will take place on Sunday, August 11<sup>th</sup> from 12Noon to 3:00pm. All NELL members are welcome. Event details including transportation arrangements are available on the Eagle Island Light website at [www.eagleislandlight.com](http://www.eagleislandlight.com)

**Before Restoration Photo**



Eagle Island Lighthouse

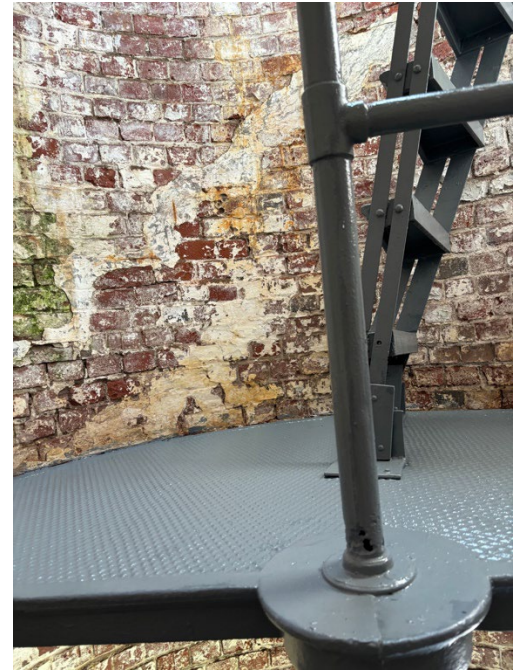


Battery house floor and ladder footing

After Photos



Battery House Landing & Ladder after Restoration



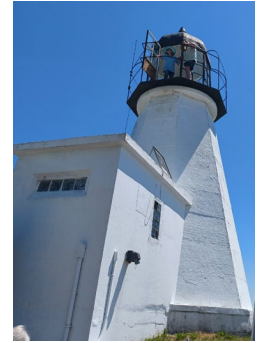
On Monday, June 17, (L to R) Bob Mills (Preservation Committee), Sharon Mills (NELL NEWS Editor), Sam Howe (Eagle Light Caretaker), Henry Winkleman (Nell past president & Nominating Committee) & Arlene Winkleman (Nell President) met in Kittery Point, Maine at Fort McClary to take a photo together because Eagle Island Lighthouse was approved for a \$5,000 Preservation Fund grant.



NEW ENGLAND LIGHTHOUSE LOVERS		0000
		JUNE 17, 2024 Date
Pay to the Order of	EAGLE ISLAND LIGHTHOUSE	\$5,000.00
	FIVE THOUSAND AND 00/100	Dollars
For:	Battery House Landing & Ladder Restoration	KATHY SANTUCCI
00000000000000000000 : 00000000000000000000 00000		

# SAVE THE DATES

## **NELL Fall Meeting, September 27-29, 2024**



### **Itinerary**

#### **Friday afternoon - September 27th - Prudence Island**

**3:30 PM - Ferry from Bristol to Prudence Island.** The Lighthouse is 1 mile from the ferry landing. If you can't walk and need transportation, I can arrange that for you. You will have 2 ½ hours to explore the Lighthouse/Climb and take in the Prudence Island Historical Society Museum. It's right across the street and has a very nice exhibit on the Lighthouse. Return on the 6:30 PM ferry.

### **OR**

**6:00 PM - Ferry from Bristol to Prudence Island.** You will have 1 ½ hours on the Island. Return on the 8:00 PM ferry. All else is the same as above.

#### **Saturday – September 28th - Save The Bay Cruise**

**9 AM to 4 PM** - Leaves from 100 Save the Bay Drive, Providence RI 02905

20 Active and Inactive Lights in Narragansett Bay

Lunch on Rose Island (included) with time to explore the Island, Lighthouse and Climb

Beavertail Light, Bristol Ferry Light, Castle Hill Light, Conanicut Light, Conimicut Light, Dutch Island Light, Gull Rocks, Hog Island Shoal Light, Lime Rock/Ida Lewis Yacht Club, Nayatt Point Light, Goat Island Light, Plum Beach Light, Pomham

RocksLight, Poplar Point Light, Prudence Island Light, Rose Island Light, Sabin Point, Warwick Light, and Wickford Harbor Light.



#### **Saturday - September 28th - Annual Membership Meeting**

**6:30 PM** Riverview Inn on Lees River  
1878 Wilbur Avenue, Somerset, MA

Pizza, Salad and Soda

#### **Sunday – September 29th - Nayatt Point Lighthouse**

**9:00 AM** Hosted by Jocelyn and Randy Kaplan  
55D Nayatt Road, Barrington, RI



### **Costs**

#### **Friday trip to Prudence Island - \$35.00**

This is an add-on, because we know everyone can't make it on Friday.

#### **Saturday and Sunday - \$170.00**

Includes Save The Bay cruise, Lunch and Dinner on Saturday, and climbing Rose Island and Nayatt Point Lighthouses.



**Friday/Saturday/Sunday - \$205.00 total per person(\$211.00 if paying with Paypal)  
Saturday/Sunday only - \$170.00 total per person (\$175.00 if paying with Paypal)**

Please send your check to: Arlene Winkleman, 99 Marion St., #1, Brookline, MA 02446  
You can also make your payment on the website: <http://www.newenglandlighthouse lovers.org/>

Hotels Rooms reserved:

**Best Western Providence-Seekonk Inn, 45 Mink St, Seekonk**

\$199/Night, plus tax. 2 nights minimum. 15 rooms reserved, all 2 queen Beds

Link: [https://www.bestwestern.com/en\\_US/book/Hotel rooms.22058.heml?  
Groupid=2U9JL3V2](https://www.bestwestern.com/en_US/book/Hotel%20rooms.22058.heml?Groupid=2U9JL3V2)

**Quality Inn, 341 Highland Ave, Seekonk, MA**

\$169 – single, \$179 – double, plus tax. 7 singles and 7 doubles reserved.

**Riverview Inn, 1878 Wilbur Ave, Somerset, MA**

\$130/night, plus tax. 15 doubles reserved.

**Lunch options for Save the Bay cruise. Pick one**

1. Vegetarian Sandwich
2. Italian Sandwich
3. Turkey & Cheese Sandwich
4. Ham & Cheese Sandwich
5. Chicken Salad Sandwich
6. Tuna Salad

Every sandwich includes a bottle of water and a bag of original chips.

**I need to know: Sherri email: [srcran9@gmail.com](mailto:srcran9@gmail.com)**

**1. Friday - Ferry to Prudence Island: Yes or No**

**If you plan to go, choose 3:30 PM or 6:00 PM trip**

**2. Do you need a ride to Prudence Lighthouse?**

**3. Lunch - Choose one of the options 1-6 above**

Save the Bay has a couple of boats; one of them is more handicapped accessible than the others. 15 on a boat. At this time, three (3) boats are reserved

## OTHER LIGHTHOUSE NEWS

\*\*There was a Ribbon Cutting and Rededication celebration at the Cape Cod Highland Lighthouse on Friday, May 3 starting at 10 AM. NELL'S VP, Sherri Roberts was able to attend the ceremony and provided a few photos of the event below: Here are a couple links that will also provide info:

[\(20+\) Facebook](#)

[HOME | highlandlighthouse](#)

(Photos in order: William Burke – Cultural Resources Program Manager, LH through fence, Jennifer Flynn – Superintendent of Cape Cod National Seashore speaking, 3 photos of Jennifer Flynn & Kevin Kissling, President & Chief Exec Officer of Eastern National cutting ribbon)





**From Member Jim Malone about a trip he & a couple other NELL members took:**

One of the more difficult to see lighthouses in the Chesapeake Bay is the one on Fishing Battery Island about 3.25 miles offshore from the Penns Beach Marina in Havre de Grace, Maryland. It is at the far northern end of the bay so it is not very convenient to other lighthouses in the area. The only other one that is close is Turkey Point Lighthouse which is about 5 miles away.

Fishing Battery Lighthouse was built in 1853. Its original lamps and reflectors were replaced with a 6th order Fresnel lens in 1855. The lighthouse was enlarged and raised to two stories in the 1890s. In 1917, an acetylene apparatus was installed eliminating the need for a resident keeper. In 1921, the light was transferred from the lantern room to a 38-foot steel tower erected near the lighthouse. This tower is still there but there is no longer an active light or aid to navigation. The tower is now home to a pair of ospreys.

John Hopp, Sherri Roberts & Jim Malone visited Fishing Battery Lighthouse on April 28, 2024. Our boat captain was Jeff Popp who took us out in his 23-foot center console fishing boat, VistaLadyFish. He was able to come in very close to the lighthouse because his boat has a very shallow draft. The water depth is only 1-foot or so in some places and we scraped bottom a few times. We were able to capture the lighthouse and the adjacent steel, former light tower from two sides. The lighthouse is in very bad shape. The lantern room is still in place on the roof but it and the steel tower appear to be leaning slightly. Half of the lighthouse structure has already collapsed but not the half directly under the roof tower and lantern room.

In addition to maneuvering into the very shallow cove (which has numerous submerged obstructions), Captain Jeff completely circumnavigated the small island so that we had many views of the lighthouse and steel tower through openings in the trees which are present all around the island. The trip from Penns Beach Marina at Heron Harbor took 15-20 minutes each way. We spent about 35 minutes at the island.

The island is part of the Susquehanna National Wildlife Refuge, Canadian geese, terns, seagulls and at least one pair of osprey nest there. There are some small stretches of narrow beach on the island and several people had anchored their boats and waded ashore to relax in the sun during the first really hot (85°) day of 2024. I do not know if it is possible to walk to the lighthouse. The growth around and on the lighthouse is abundant. I am not certain whether or not the land immediately around the lighthouse is dry. As mentioned, the lighthouse building is partially collapsed and it may be dangerous to get very close. We could see nothing inside the lantern room and we could not see any stairs inside the lighthouse.

There were about a dozen boats anchored when we were there, but in the summer there are hundreds. The island is known for the party goers who arrive whenever the weather is nice and the sun is out (local captains reported that some sunbathers apparently decided that clothing is optional on the island).

If any NELL members want to get close to Fishing Battery Lighthouse, Captain Jeff Popp's contact information is below. His boat can carry 6 passengers and he charged us \$125 per person with a \$250 minimum. However, another NELL member and one other person took this boat on April 19 and, from the photos I have seen, they were able to come maybe 10-20 feet closer. This could be because of the tide; however, we were there at high tide April 28. I think the distance navigable into the cove (for the best photos) is more dependent on the weight in the boat. For this reason, I recommend groups of 2 or 3 people only. Since Captain Jeff charges by the person, two trips of 3 could accommodate an overall group of 6 for the same total price. Scheduling the trip around high tide would also be advisable. The time of year is also important. The ear-shaped island has many trees near the shore on all sides. The trees were just starting to leaf out in late April. We had good views, but it would have been better from November through March. Captain Jeff has his boat in the water all year.

Captain Jeff Popp  
Captain Ryan Popp (Jeff's son)  
VistaLadyFish.com  
[Jeff@vistaladyfish.com](mailto:Jeff@vistaladyfish.com)  
[Ryan@vistaladyfish.com](mailto:Ryan@vistaladyfish.com)  
410-790-2015 (Voice & Text)

(First 5 photos taken by Jim Malone, next 2 taken by Sheri Roberts, last photo taken by Editor in Aug. 2006 for comparison)





Nell member Janet Balliet took a trip to Aruba on April 27 to May 4. She sent a short description of the trip and provided the photos below of the lighthouse, one of the sea glass beach, dinner on the water, view from the top of the lighthouse, and a sunset.

Recently I traveled to Aruba for a week with friends from FL & NY. We visited the butterfly farm and I tried to get a picture with their wings spread, but was unsuccessful! We climbed the 117 steps of the California lighthouse. It is named after the SS California that sunk nearby in 1891. The highlight of my trip was visiting sea glass island. We were taken by boat & landed on a beach covered with glass! My friend found a piece of red glass and a stopper (this was her first time hunting)! I don't know if this was good luck or bad luck (for me). Then we ate dinner at Flying Fishbones. We were seated at a table in the water. The waiters were either barefoot or wearing boots. There were underwater lights & we saw fish while eating! WE sailed on a pirate ship and saw a spectacular sunset. Our last day we visited the Royal Aruba Aloe factory and did a tour. Very little rain, but weather was very hot (80s) with high humidity. Was a wonderful trip!



## Prudence Island

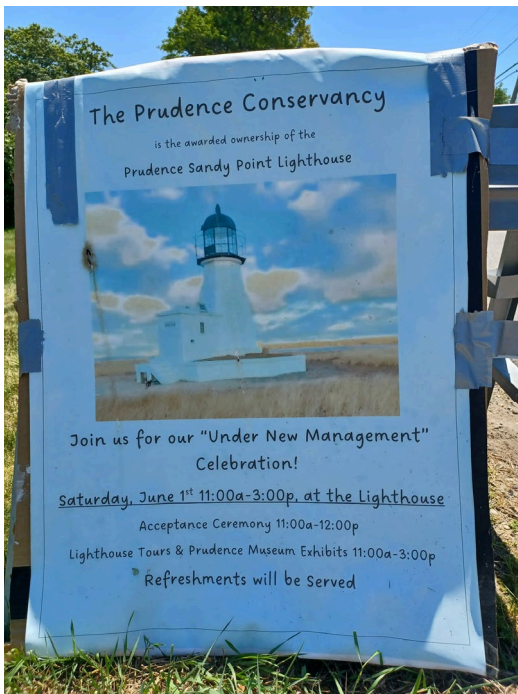
On June 1, 2024 Prudence Island Conservancy held a ceremony celebrating the awarding of full Lighthouse ownership of Sandy Point Lighthouse, aka Prudence Island Lighthouse. This was awarded thru the National Historic Lighthouse Preservation Act of 2000. The community showed up in droves, you could tell they share a commitment to preserving this iconic structure. Elaine and Fred Watson joined me on this day to help the community celebrate.

Sherri Roberts

(Photo's top to bottom - Sign of Event, Visitor Turnout, Ray Jenness, Chairman of Prudence Conservancy with US Senator Jack Reed, Ray Jenness opening door to lighthouse, stairs to tower, Elaine & Fred Watson at top of tower, Elaine & Fred in door of tower, top of lighthouse, lens & view in lantern room of tower)

A link with more info on event:

[-Prudence Island Lighthouse gets new steward - What&apos;s Up Newp](#)







## **FROM President of NELL:**

First – we are very grateful to Sherri Roberts who organized the Spring Trip to Pomham Rocks Lighthouse and Watch Hill Lighthouse – and arranged for Sally Snowman to speak to our group at the Cranston Library. Special thanks to Linda Sherlock who stepped in to help when Sherri was busy with family matters.

Linda also put the packets together for all the participants.

In addition, we also thank:

Bob Taylor for creating the pins and postcards

Sean Curran for securing the use of the Elks Hall for our meeting

Debbie Lilly for preparing the historical information on the 2 lighthouses

I understand the winners in our drawing were surprised to be winners – and happy with the prizes. Thank you to Ellen and Bob Granoth and Anthony Savino for all their work organizing this successful fundraiser.

Look for more information about their latest idea for raising money for the NELL Preservation Fund. We hope everyone will support their efforts.

While NELL was visiting lighthouses in Rhode Island Henry and I were visiting Vienna and Israel. We had beautiful weather and a lovely time – with MUCH walking. Fortunately, where we were in Israel (the middle of the country primarily around Tel Aviv) we did not encounter any problems. We went to Israel to attend a wedding – and visit friends and family. We found ourselves in Jaffa several times. We wanted to see the lighthouse. In February 2023 when we were in Israel the lighthouse was encased in scaffolding. This time we found it standing proudly overlooking the harbor. We were surprised to see that it was painted totally white. In the past the lighthouse was painted red and white. I did send an email to the organization that oversees the lighthouse – asking why the change in color. To date I have not received an answer.



At the meeting the membership voted to accept the Preservation Committee's Report – and for NELL to give Eagle Light \$5,000.00 toward the restoration project.

I hope you have many lighthouse adventures this summer – send your pictures and news to Sharon so we can share through NELL News.

Watch for information about our next ZOOM meeting when Bob Taylor will present another travelogue from his USLHS trip.

Also read Sherri's information about our Fall Trip in September.

Wishing everyone a safe and healthy summer

Arlene

#####



Your own personalized NELL Tumbler  
**If you still want a NELL Tumbler contact Sandy Peterson at 860-434-2323 or look for details on the NELL website:**

#####

### NELL labeled merchandise

There's been a request for button down shirts with the NELL logo. There are several options available – style, weight, LS, SS, color, so if you're interested in a new NELL shirt, sweatshirt, or whatever, contact Jean at [nellmembership@mail.com](mailto:nellmembership@mail.com) and she will try to get it to you in time for the fall trip. Pricing will be cost plus \$5 for Preservation; delivery negotiable.





Eric Sharp 7/01  
Sara Greene 7/07

Linda Allen 7/04  
Lee Olson 7/12  
Odette Kent 7/24

David Schulman 7/05  
Tracie Carpenter 7/15

Elinor DeWire 8/03  
Geraldine Powell 8/12

Bill Newblom 8/04

Marilyn Zimman 8/06  
Ron Bandock 8/30



Happy Anniversary



Happy Anniversary

Bill & Judy Newblom 7/09  
Chris & Marie Alex 7/11

Robert & Marilyn Zimman 7/15  
Norm & Cynthia Bosse 7/23

Bob & Ellen Granoth 8/10  
Frank & Carolyn Carbone 8/14

David & Jessica Schulman 8/20

### HEALING AND SPEEDY RECOVERY



For any NELL members who are having continuing health issues, or a cold, flu, covid, etc. as we head into Summer, we hope you will feel better soon.



# NELL Membership News

**Welcome to our newest members!**

Kathy Martin Northhampton MA  
Tony Ferrano Westerly, RI  
Watch Hill Light groundskeeper



Don't forget - Give a NELL application to everyone you know. You might just hit pay dirt! Mine goes with me to the Chamber of Commerce events, the Riverside Renaissance Organization in my hometown, and my local library where I volunteer. Ya never know!



## Application

Name(s) \_\_\_\_\_ Birthday M/D \_\_\_\_\_ Anniversary M/Y \_\_\_\_\_  
\_\_\_\_\_ Birthday M/D \_\_\_\_\_ Anniversary M/Y \_\_\_\_\_  
\_\_\_\_\_ Birthday M/D \_\_\_\_\_ Anniversary M/Y \_\_\_\_\_

Address: \_\_\_\_\_ Telephone: \_\_\_\_\_  
\_\_\_\_\_ Cell phone(S): \_\_\_\_\_  
\_\_\_\_\_ Email: \_\_\_\_\_

Membership Type: Check One

- \_\_\_\_\_ Junior Members (ages 6 through 17)..... \$10.00
- \_\_\_\_\_ Individual (one adult age 18+)..... \$20.00
- \_\_\_\_\_ Dual (2 adults living in same household, age 18+)..... \$30.00
- \_\_\_\_\_ Family (1 or 2 adults age 18+ and children through age 17).. \$40.00
- \_\_\_\_\_ Life Individual (one adult age 18+)..... \$500.00
- \_\_\_\_\_ Life Dual (2 adults living in same household, age 18+)..... \$800.00
- \_\_\_\_\_ Business, Corporation, Organization Membership Dues..... \$50.00

Make checks payable to NELL and send to:

NELL  
1 Princeton Ave  
Riverside RI 02915-2632  
You can also pay through our website [newenglandlighthouse lovers.com](http://newenglandlighthouse lovers.com)  
A PayPal account is not required for payment

Several NELL Members have asked for the Treasurer's Report - Here is a copy from the Spring Meeting

12:47 PM  
05/13/24  
Cash Basis

**New England Lighthouse Lovers Inc.**  
**Balance Sheet**  
As of May 13, 2024

	May 13, 24
<b>ASSETS</b>	
Current Assets	
Checking/Savings	
Cash - General Fund	10,347.56
Cash - Paypal	65.14
Cash - Preservation Fund	18,007.76
Total Checking/Savings	28,420.46
Total Current Assets	28,420.46
<b>TOTAL ASSETS</b>	<b>28,420.46</b>
<b>LIABILITIES &amp; EQUITY</b>	
Equity	
Unrestricted Net Assets	23,724.43
Net Income	4,696.03
Total Equity	28,420.46
<b>TOTAL LIABILITIES &amp; EQUITY</b>	<b>28,420.46</b>

12:47 PM  
05/13/24  
Cash Basis

**New England Lighthouse Lovers Inc.**  
**Profit & Loss**  
January 1 through May 13, 2024

	Jan 1 - May 13, 24
<b>Ordinary Income/Expense</b>	
Income	
Donations	66.00
Interest Income	0.25
LHHC&Y	667.50
Membership Dues	855.00
Raffle	3,400.00
Spring Trip	2,719.00
Total Income	7,707.75
Cost of Goods Sold	
Tumblers	140.00
Total COGS	140.00
Gross Profit	7,567.75
Expense	
Donations for Lighthouses	430.00
Insurance	1,308.00
LHHC&Y Expenses	524.20
Paypal fees	65.56
Spring Trip Expenses	543.96
Total Expense	2,871.72
Net Ordinary Income	4,696.03
Net Income	4,696.03

Our board is finally full and we have a New President, Arlene Winkleman. We are still looking for volunteers who are interested in serving on committees, those who have good ideas for lighthouse preservation, fund raising, suggestions on improving the operations of the club, or just getting more involved. Please contact Arlene Winkleman (617) 731-5181 Home 781-820-9980. Arlene's cell (not a smart phone) 781-820-9977. Henry's iPhone - use this to send texts and messages or via e-mail: [wink8@mindspring.com](mailto:wink8@mindspring.com)

**The Lighthouse Digest** - For each subscription, please use the form on the NELL website. Mail with check to Lighthouse Digest, ATTN: Kathleen Finnegan, P.O. Box 250, East Machias, ME 04630. Be sure to write NELL in the memo section of your check and NELL will receive \$10.00 per subscription to go toward restoration and preservation of lighthouses.

If you know of a member that needs **some cheer, get well wishes, condolences or congratulations**, please let Cynthia Bosse - Sunshine Chair know at: [bossnjc@comcast.net](mailto:bossnjc@comcast.net) or call 1(860) 688-7347.

If you have any **knowledge of an upcoming event or news to share**, please send it to me at [smills8839@aol.com](mailto:smills8839@aol.com). All articles and information must be received by the 20th of the prior month to make the publication.

Please let me know your **birthday** (month & day only) and **anniversary** so I will be able to recognize you on your special day in our monthly Best Wishes section.

**Final words from your Editor:** Again I wish to thank anyone who has given me permission to use photos they took, members who have sent articles and information about lighthouse events, and others who have helped make this YOUR Newsletter. Articles and suggestions are always welcome. Sharon Mills



**CELEBRATING 25  
YEARS!!!!**

